

# PERVASIVE DATA SCIENCE

## The Sensors and The City



**PETTERI NURMI**

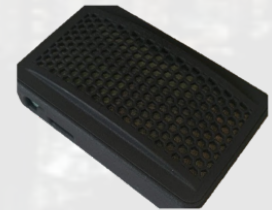
**UNIVERSITY OF HELSINKI, DEPARTMENT OF COMPUTER SCIENCE**

**[PETTERI.NURMI@HELSINKI.FI](mailto:petteri.nurmi@helsinki.fi)**

**[PDS.CS.HELSINKI.FI](http://pds.cs.helsinki.fi)**

Our environments are saturated with  
sensor-enabled devices

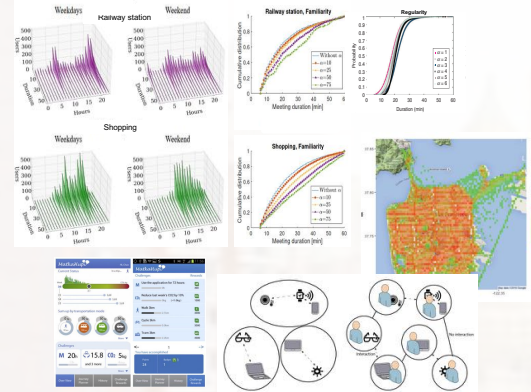
Pervasive data science investigates  
what we can do with the data these  
devices produce



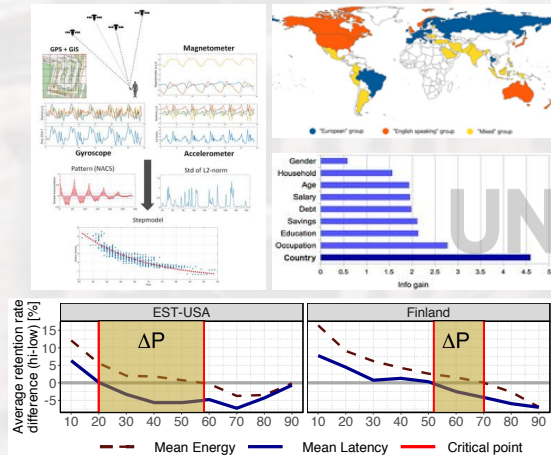


# Selected application areas

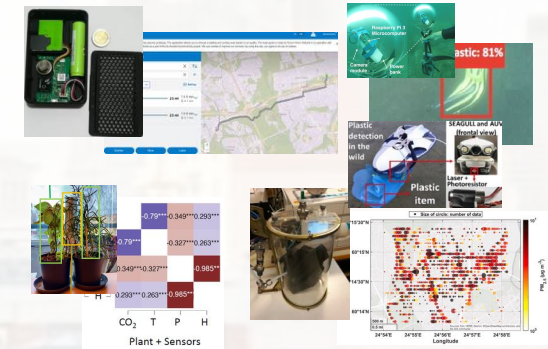
## Mobility



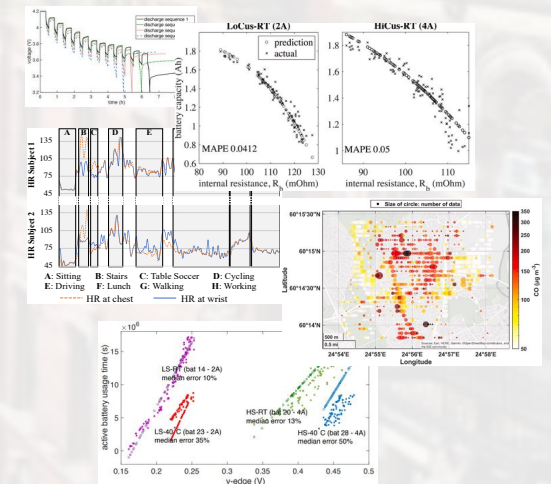
## Behaviour Analysis



## Environmental Monitoring

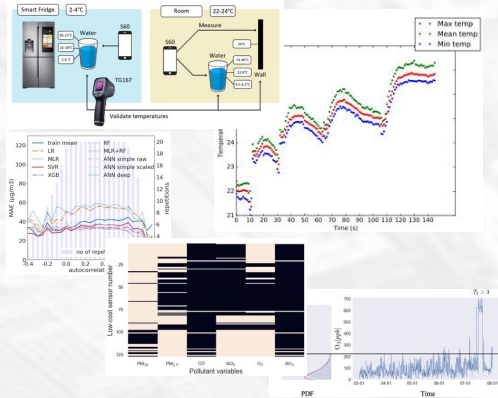


## Pervasive Health

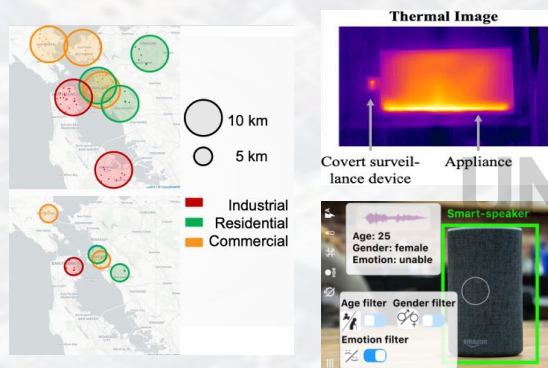




## Improving Data Quality

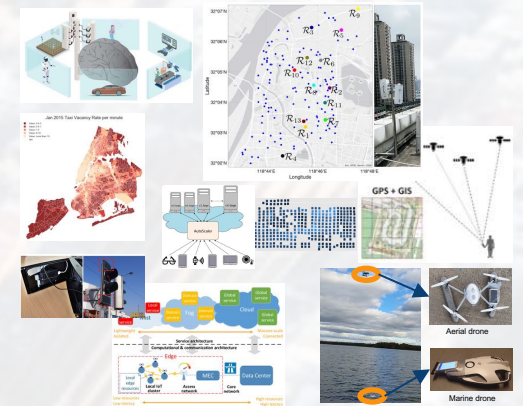


## Security and Privacy Considerations



For more information  
 Contact: Petteri Nurmi  
[petteri.nurmi@helsinki.fi](mailto:petteri.nurmi@helsinki.fi)  
 See: [pds.cs.helsinki.fi](http://pds.cs.helsinki.fi)

## System Challenges



## Novel Mechanisms to Collect Data

